

MILK CARAFE CLEANING  
PULIZIA DELLA CARAFFA DEL LATTE

Italiano

English

EVERY  
**1**  
DAY

*It is important that you clean the milk carafe daily or after each use in order to preserve hygiene and ensure perfect frothed milk consistency.*

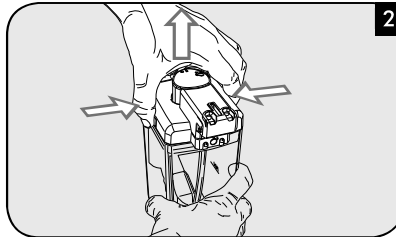
**È importante pulire la caraffa del latte ogni giorno e dopo ogni utilizzo al fine di mantenere l'igiene e garantire la preparazione di latte emulsionato dalla consistenza perfetta.**

**Daily**  
**Quotidiana**



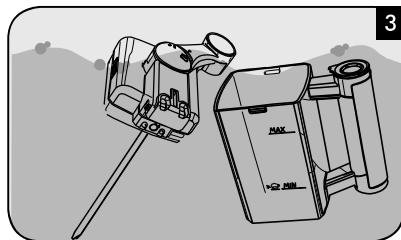
*Disengage the handle by rotating it clockwise.*

Sganciare il manico ruotandolo in senso orario.



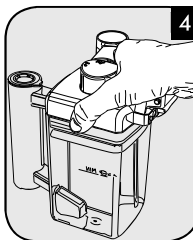
*Press on the sides and lift the lid.*

Premere ai lati e sollevare il coperchio.



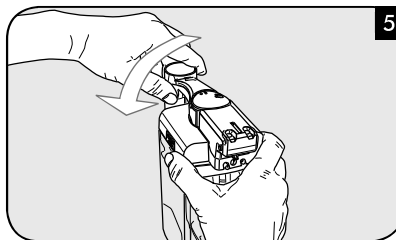
*Rinse the top of the carafe and the milk carafe with lukewarm water. Remove all milk residues.*

Risciacquare la parte superiore della caraffa e la caraffa del latte con acqua tiepida. Rimuovere ogni residuo di latte.



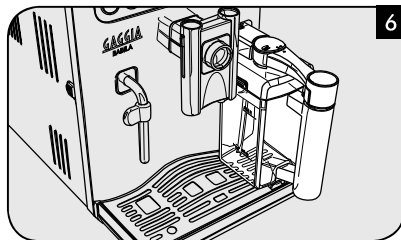
*Fit the lid on the carafe.*

Inserire il coperchio nella caraffa.



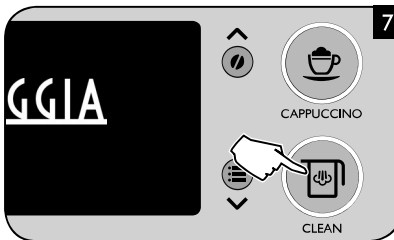
*Rotate the handle counter-clockwise to bring it to the locked position.*

Ruotare il manico in senso antiorario per riportarlo nella posizione di chiusura.



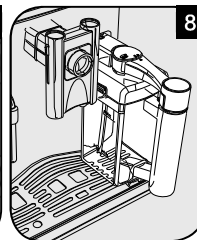
*Insert the milk carafe by pushing it downwards until it is locked onto the (external) drip tray.*

Inserire la caraffa del latte verso il basso fino ad agganciarla alla vasca raccogliogocce (esterna).



*Press the **CLEAN** button. The machine performs an additional cleaning cycle.*

Premere il tasto **CLEAN**. La macchina esegue un ciclo di pulizia aggiuntivo.



*At the end, you can remove the carafe now ready for use.*

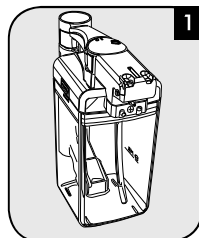
Al termine, è possibile rimuovere la caraffa che è già pronta all'uso.

EN  
IT

EVERY



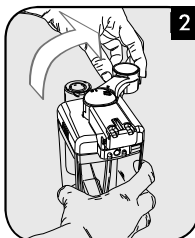
DAYS

**Weekly****Settimanale**

1

Remove the carafe from the machine.

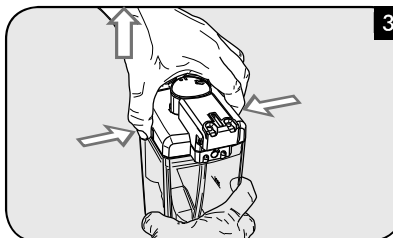
Rimuovere la caraffa dalla macchina.



2

Disengage the handle by rotating it clockwise.

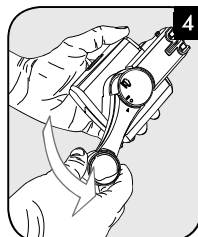
Sganciare il manico ruotandolo in senso orario.



3

Press on the sides and lift the lid.

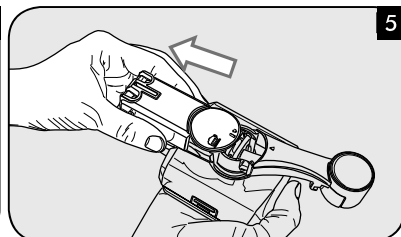
Premere ai lati e sollevare il coperchio.



4

EN Rotate the handle counter-clockwise to the unlock position.

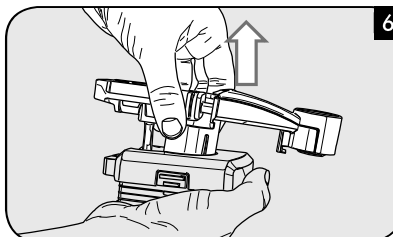
IT Ruotare il manico nella posizione di sblocco ruotandolo in senso antiorario.



5

Remove the connector that comes into contact with the machine.

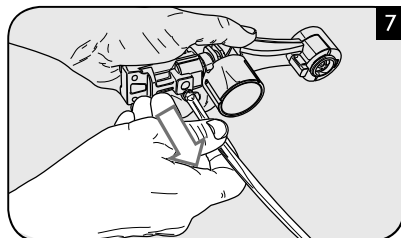
Estrarre il connettore che va a contatto con la macchina.



6

Remove the handle with the suction tube.

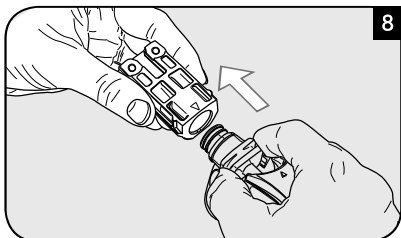
Estrarre il manico con il tubo di aspirazione.



7

EN Remove the suction tube.

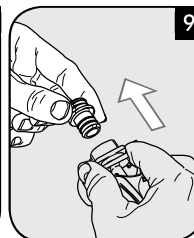
IT Estrarre il tubo di aspirazione.



8

Remove the external fitting by pulling it.

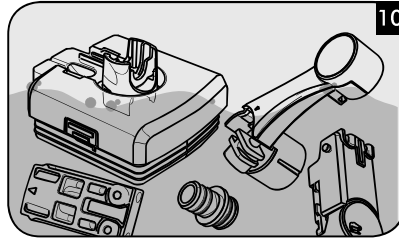
Rimuovere il raccordo esterno tirandolo.



9

Remove the internal fitting.

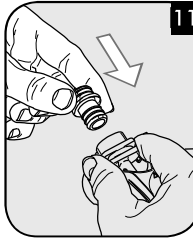
Rimuovere il raccordo interno.



10

**EN** Clean all the parts thoroughly with lukewarm water.

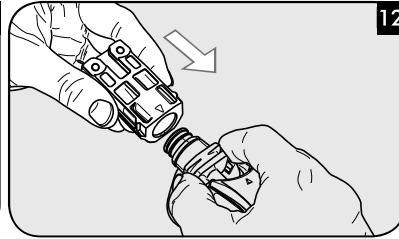
**IT** Pulire a fondo tutti i componenti con acqua tiepida.



11

**EN** Insert the internal fitting in the tube and press until fully inserting it.

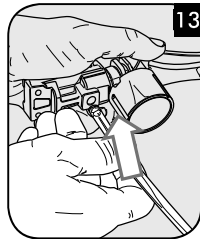
**IT** Inserire il raccordo interno nel tubo e premerlo fino in fondo.



12

**EN** Insert the external fitting in the previous fitting. Refer to the arrow in the figure to insert it correctly.

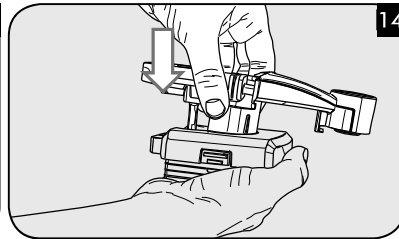
**IT** Inserire il raccordo esterno nel precedente raccordo. Fare attenzione, il verso d'inserimento è mostrato dalla freccia.



13

**EN** Insert the tube in the external fitting.

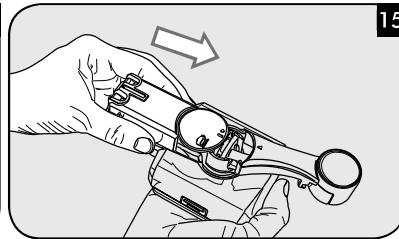
**IT** Inserire il tubo nel raccordo esterno.



14

**EN** Insert the newly-assembled unit in the cover base. **Pay attention to the reference.**

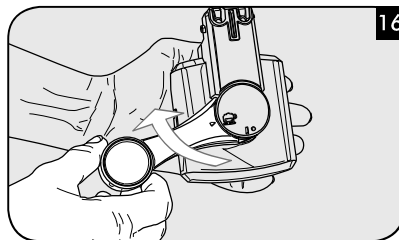
**IT** Inserire il gruppo appena montato nella base del coperchio. **Fare attenzione al riferimento.**



15

**EN** Fit the external cover. Make sure it is inserted into the base guides.

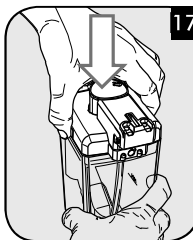
**IT** Inserire la copertura esterna. Questa si deve inserire nelle guide della base.



16

**EN** Rotate the handle clockwise up to the ☕ symbol.

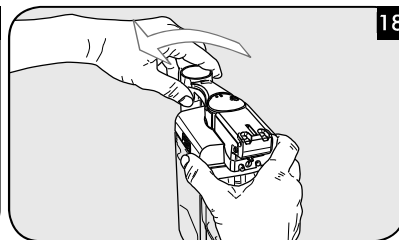
**IT** Ruotare in senso orario il manico fino al simbolo ☕.



17

**EN** Fit the lid on the carafe.

**IT** Inserire il coperchio nella caraffa.



18

**EN** Rotate the handle counter-clockwise to bring it to the closed position. The carafe is now ready for use.

**IT** Ruotare il manico in senso antiorario per riportarlo nella posizione di chiusura. La caraffa è pronta per l'uso.