

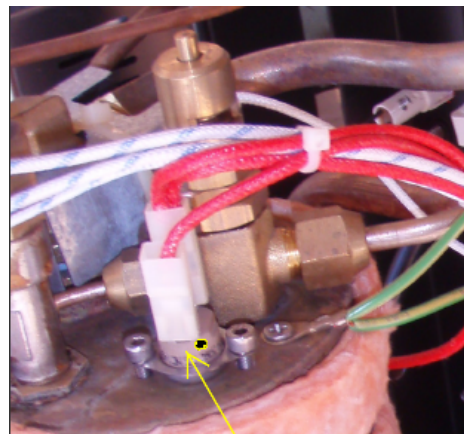
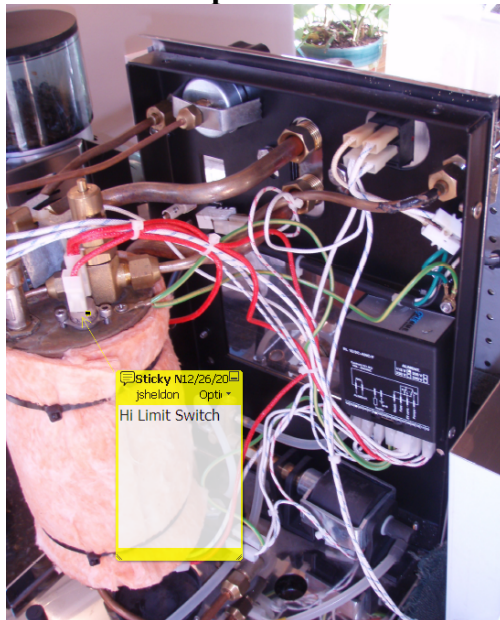
Expobar High Limit Switch Reset Instructions

Tools Required

- 3 mm Allen wrench
- Phillips head screw driver
- Needle nose pliers

1. *******Make sure the machine is unplugged and cool before beginning*******
2. Remove the cup warming plate and water reservoir.
3. There are 7 screws that need to be taken off to remove the housing and access the interior:
 - a. Unscrew the 2 chrome Phillips head screws on top of the machine in the front left/right corners
 - b. There are 5 screws on the outside of the Expobar Lever/Brewtus that hold the “U” shaped metal housing on the machine. There are 2 sets of screws on the left and right side toward front of the machine. There is also 1 screw at the back of the machine at the base. Remove all 5 screws and slide the housing off.
4. The high limit switch (part number EX-10200110) is located on top of the boiler. It is small, round, tan in color, and about the diameter of a dime. It is fastened to the top of the boiler by two small, chrome 3mm Allen bolts. In the center of the high limit switch is a very small **red plunger** (looks like a pin). Toggle the plunger up and down a few times to be sure the switch is reset. **Please note: it will not look like it has tripped or popped. It looks the same regardless of whether or not the limit has tripped.**

Expobar Office Lever



5. Re-assemble machine in reverse order.
6. Verify that the switch has been reset properly:
 - a. The small round **red** led light, located under the Hot Water Tap will go on as soon as the machine is turned on. This lets the owner know that the heating element has been re-engaged.
 - b. You will be ready to brew in about 10 minutes.