

WHOLE LATTE LOVE

ROTARY PUMP CONVERSION GUIDE^(5/9/13)

This is a guide to assist with the installation of a Rotary Pump in place of an existing vibration pump in an Expobar Brewtus or an Expobar Office Lever

IMPORTANT NOTICE: This is a guide for your use, it is not a step by step instruction manual. This installation is to be completed only by qualified individuals who are familiar with working with electricity and has the other skills needed to connect water lines and plumbing fittings. If you are not qualified to complete this work please arrange to have the unit sent in and we can do the work for you.

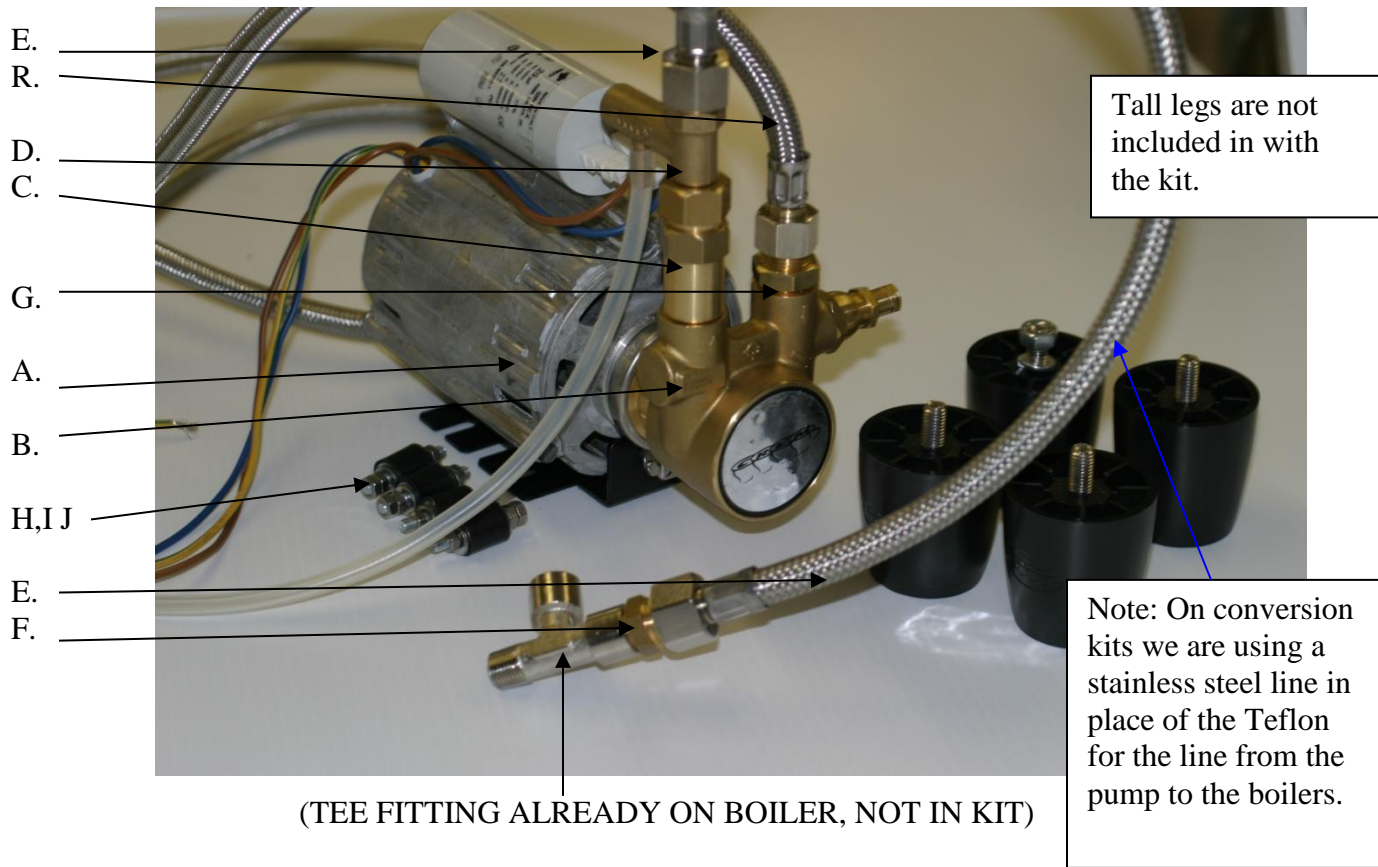
Note: This kit does not include tall legs because some machines already have tall legs on them. The stainless steel water line will be able to run out of the bottom of the machine but it is tight and does pinch the tubing a little. We do recommend the legs and we do normally have them in stock.

1. Please review the entire guide before starting work.
2. Always make sure the machine is not plugged in when working it.
3. The installation is to include:
 - a. Remove the housing.
 - b. Remove and discard the existing pump and OPV, keep the soft rubber tubing for later use.
 - c. Remove and discard the reservoir holder.
 - d. Splice the two wires that were on the end switch under the reservoir holder with the included crimp connector and cover with heat shrink.
 - e. Install new pump as shown in the guide. Drill 4 holes and mount to the housing using the rubber mounts.
 - f. Install adapter (F) into the "T" fitting under the boilers and run the stainless steel water line to it from the pump.
 - g. Drill out housing and install the new cup warmer tray.
 - h. Run wires from the vibration pump to the rotary pump. Use the included "spade" style terminals to connect the wires together.
 - i. Run the existing rubber tube from the new OPV to the drain tube behind the blow off tube on the brew group.
 - j. Turn on water and check for leaks.
4. Never run the pump dry. It will draw water from a non pressurized container but it is easy to forget to fill it. Use caution.
5. The pump will run fine on any normal incoming water pressure.
6. When using a direct water line connection it is recommended to also hook up a drain line.
7. At the end of this document is a basic guide to show how to adjust the brew pressure. The brew pressure should be set to 9 bar with a back flush disc in place.
8. The OPV should be set to release at no higher than 11 bar.

Please use Caution when doing this install and if it is above your skill level do not attempt it.

Let me know if you have any questions.

Todd Salzman
Whole Latte Love



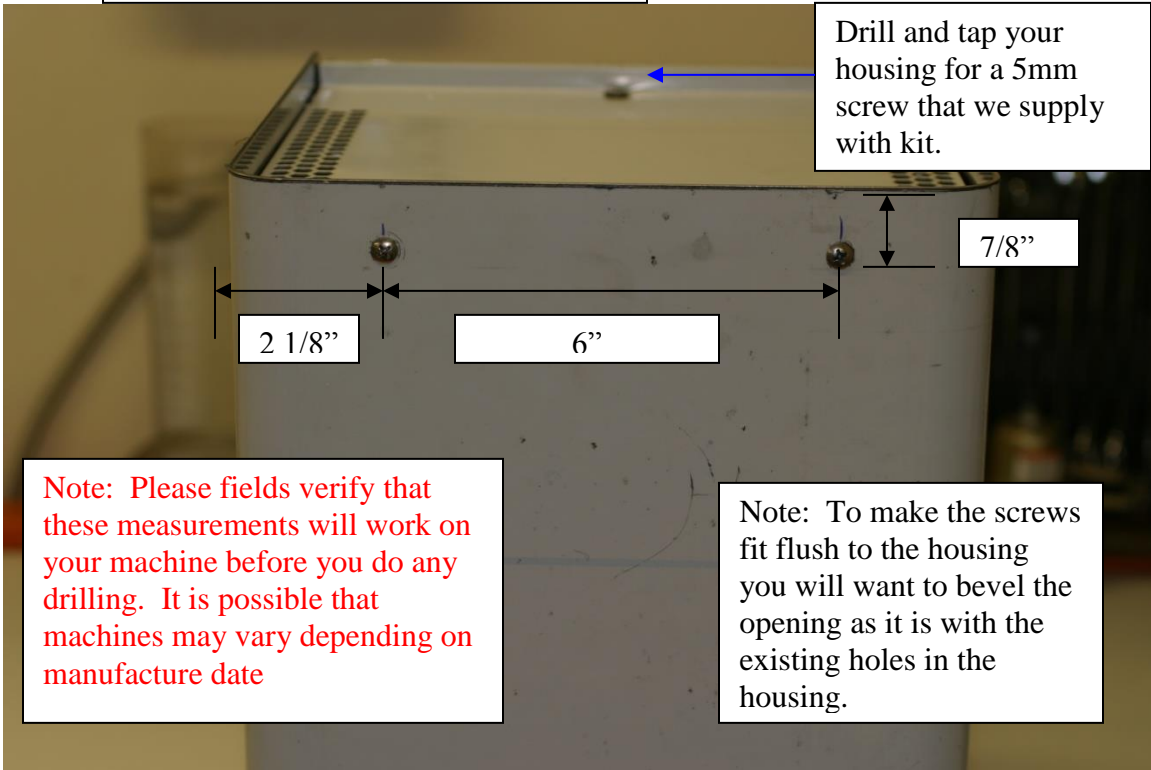
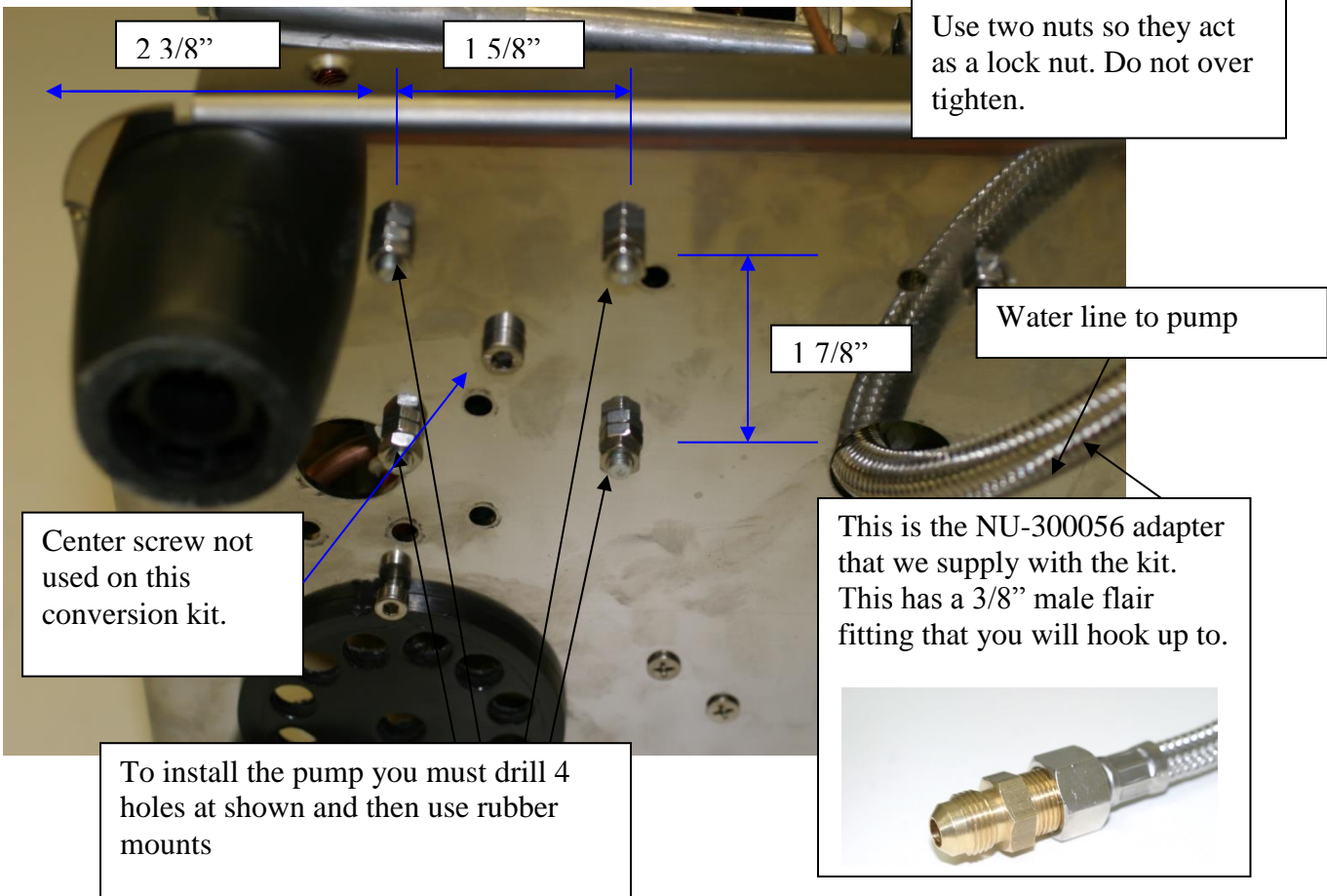
Tall legs are not included in with the kit.

Note: On conversion kits we are using a stainless steel line in place of the Teflon for the line from the pump to the boilers.

(TEE FITTING ALREADY ON BOILER, NOT IN KIT)

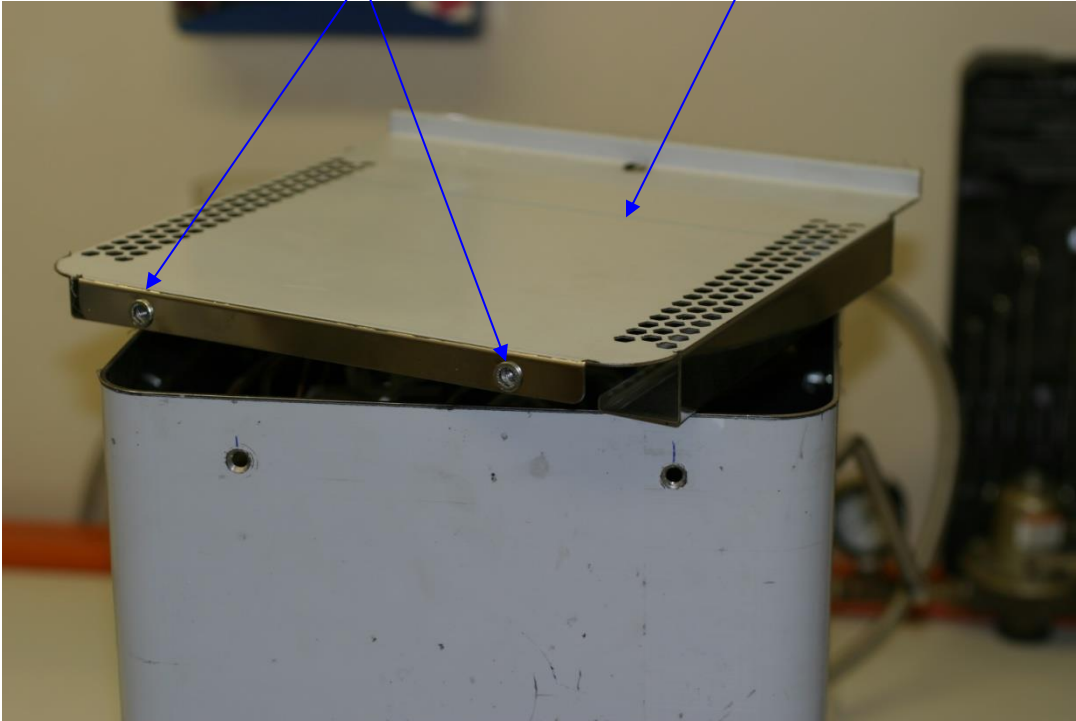
ROTARY PUMP CONVERSION FROM VIBRATION PUMP

REF	QTY	SKU	DESCRIPTION
A	1	EX-60000023	ROTARY PUMP MOTOR
B	1	EX-60000033	COMPACT PUMP
C	1	EX-65000015	RETENTION VALVE 3/8X1/8
D	1	EX-30400055	OPV
E	1	NU-700182	20" SS WATER LINE TO BOILERS
F	1	NU-700036	3/8"MX1/4"M ADAPTER
G	1	EX-30000240	3/8"MX3/8"M ADAPTER
H	4	EX-50100000	RUBBER PUMP MOUNTS (ROTARY)
I	12	EX-25093410	NUT M-5 DIN-934
J	8	EX-25012520	WASHER M-6 DIN-125
K	2	EX-25000045	M5 RIVETS
L	1	EX-10000072	CUP TRAY BIII ROTARY
M	2	EX-45003110	FEM FASTON COVER PER-5007
N	2	EX-45003100	FEM FASTON TERMINALS PE109
O	2	EX-45003200	TERM FASTON MALE PE117
P	2	EX-45003210	MALE FASTON COVER PEF5016
Q	3	EX-25096620	PHILLIPS SCREW
R	1	EX-35900180	SS WATER LINE 180 CM
S	1	NU-300056	3/8"BSP to 3/8" Flair
T	1	MC-7864K32-	2" HEAT SHRINK
U	1	RS-643036	Crimp Connector



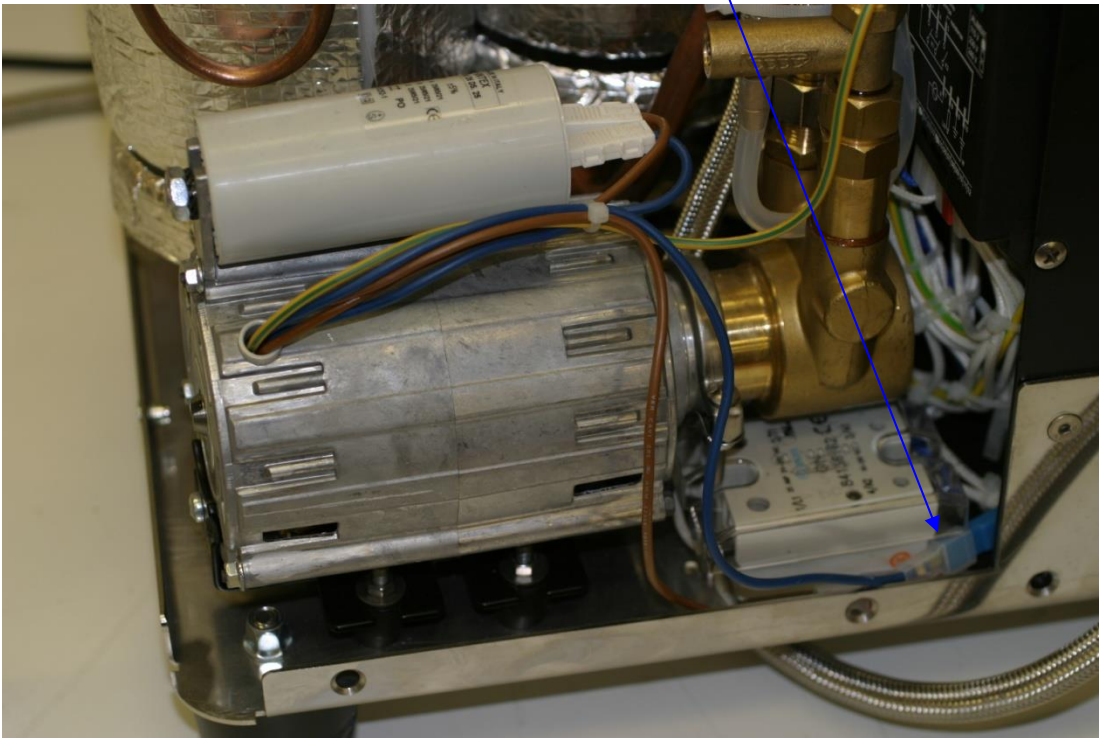
K M5 Rivets that we install

L Cup Tray BIII Rotary



Extend wires from existing vibration pump to Blue and Brown on the rotary pump.

Note: Only qualified individuals should complete electrical work.



Adjusting the pump pressure

CAUTION: Adjusting the pump pressure can be time consuming and since it is very close to the electrical connection on the boiler we recommend that all adjustments are done when the machine is not plugged in.

Note: We recommend that the Rotary pump be set to 9 bar with the back flush disc in place so there is no flow and the OPV should be set to open at 11 bar.

How to Adjust the pump pressure: Adjust the pump pressure by loosening the lock nut then turning the adjustment screw. Turn the adjustment screw clockwise to raise the pressure and counter clockwise to lower the pressure.

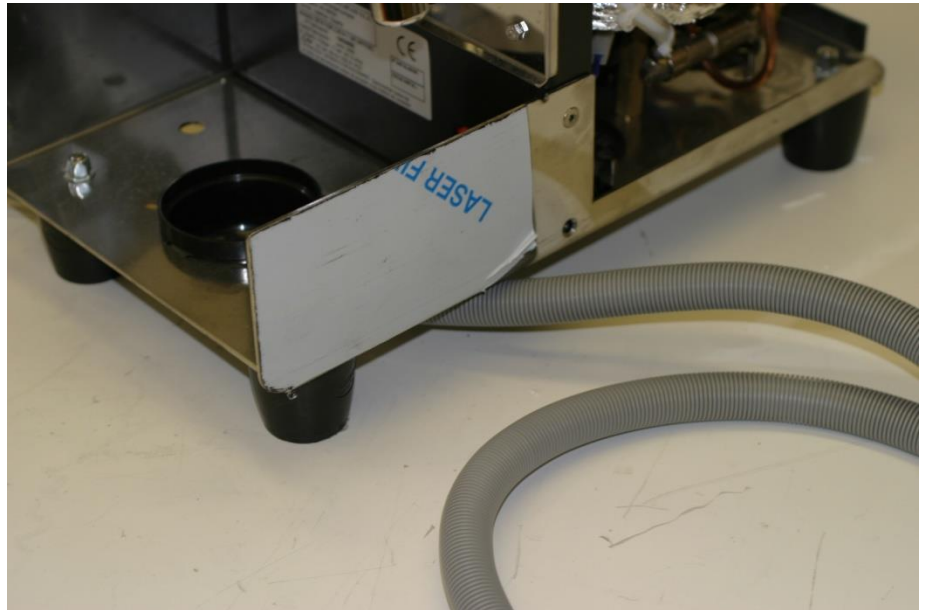
Set the OPV: To set the OPV you will have to run the machine with the backflush disc in place. First raise the brew pressure to 11 bar. Then with the pump running turn the adjustment screw on the OPV so that it just starts to let water flow out of the over flow tube behind the blow off tube on the brew group. It is now set to open at 11 bar.

Set the Brew Pressure: Turn the adjustment screw counter clockwise to lower the pressure and clockwise to raise it. Make your adjustment with the machine unplugged and then plug it in and test your setting. Between adjustments lower the lever on the brew group to release the pressure. When you have the pressure adjusted tighten the lock whole holding the adjustment screw in place or it may turn and change the setting.

Drain line for Rotary pump kit.

QTY	SKU	DESCRIPTION
1	EX-70001000	DRAIN FILTER HIGH GROUP
1	EX-DRAINTUBE	BREWUS FLEX TUBE (DRAIN)
4	EX-70000045	TALL LEGS
4	EX-25000055	NUTS FOR TALL LEGS

Note: Due to availability we may use different style legs.



Note: Drill a 1/4" hole in the existing drain pan.

