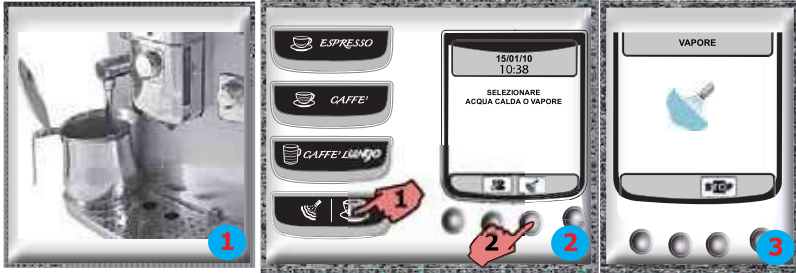


Dispensing steam



- 1) Place a container beneath the hot water/ steam dispensing pipe
- 2) Press button (1)
Press button (2)
to start dispensing
- 3) Remove the container at the end.
Repeat the process to dispense another dose

3.2. Machine signals



Close the coffee bean container lid for any beverage to be dispensed



A beverage containing milk has been selected. Press the "ESC" key to cancel the selection.



Fill the coffee container with coffee beans



The carafe rinse function has been selected. Press the "ESC" key to cancel the selection.



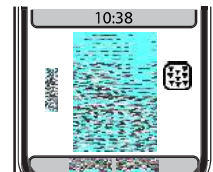
Insert the coffee unit into its housing



An operation that requires a dispensing cycle of the milk container has been selected. Press the "ESC" key to cancel the selection.



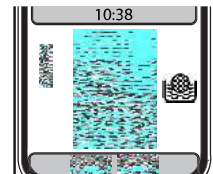
Insert the dreg drawer and the drip tray



The machine requires a descaling cycle. Damages caused due to the descaling cycle not being implemented non are not covered by the warranty.



Empty the drip tray that is beneath the coffee unit and the dreg drawer. **Only if the machine requires it and it is switched on.**



The machine requires the "Intenza" water filter to be replaced with a new one. Replace the filter.



The front door must be closed for the machine to be functional



Flashing red LED.
Machine in stand-by.

Press

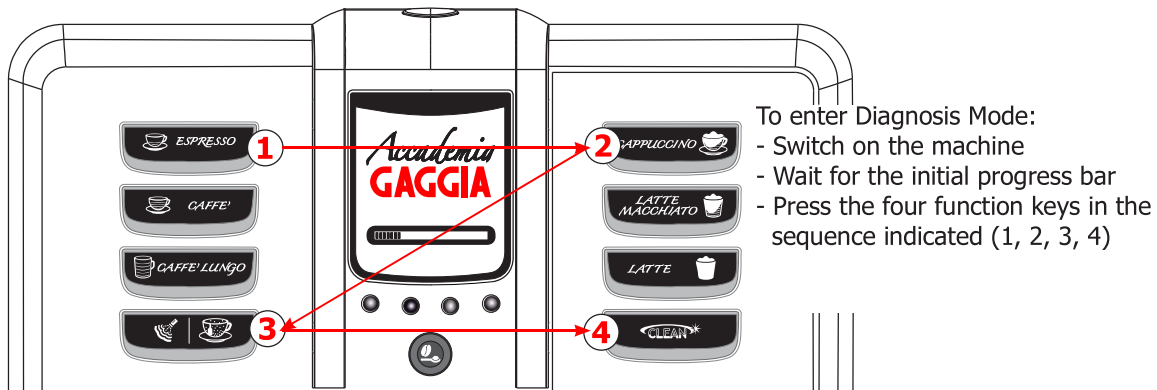


Remove the tank and fill it with fresh drinking water

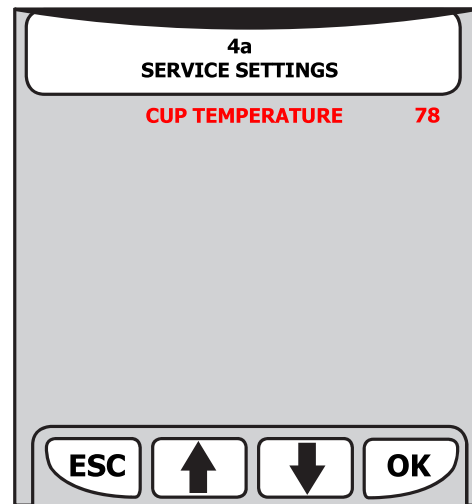
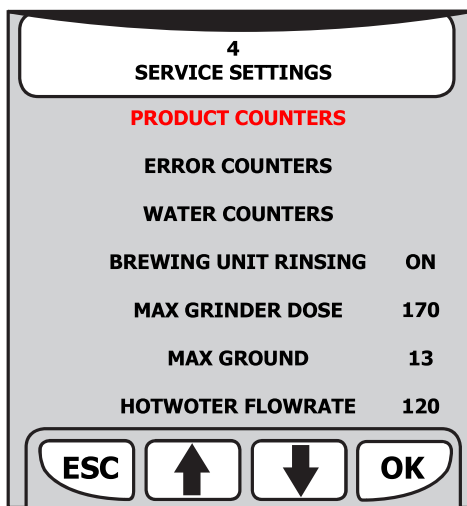


An error has occurred. Take note of the code (E xx). Switch off the machine and switch it back on after 30 seconds. If the problem persists, contact the assistance centre.

5.2. Diagnosis mode



Entering the Diagnosis Mode presents the main eight menu options.



PRODUCT COUNTERS



The number of dispensing cycles performed by the machine is displayed for each product.
The counters cannot be reset.
The value may be different from that shown in the user menu as the latter can be reset.
Press ESC to return to the main menu.

5.3. Error messages

code	brief description	description
01	blocked coffee grinder	the coffee grinder is blocked (jammed grinder blades or sensor is not reading properly)
03	brewing unit blocked in 'work'	descending time-out exceeded
04	brewing unit blocked in 'home'	ascending time-out exceeded
05	blocked water circuit	water does not flow in the flow meter
06	frother unit solenoid valve	short circuit in a solenoid valve of the frother unit
10	coffee boiler short circuit	coffee boiler temperature sensor short circuit
11	coffee boiler in open circuit	coffee boiler temperature sensor in open circuit
12	steam boiler short circuit	steam boiler temperature sensor short circuit
13	steam boiler in open circuit	steam boiler temperature sensor in open circuit
14	various temperature errors (in the coffee boiler)	coffee boiler temperatures out of control
15	various temperature errors (in the steam boiler)	steam boiler temperatures out of control
16	coffee unit short circuit	brewing unit microswitch short circuit
17	not used	
18	clock error	memory fault or impossible to set
19	no zero crossing	no zero crossing on board, could also be caused by the power board
20	not used	